

## Formation Colours Ecworx S™ Tile

Stijlnummer	5T504	
Collectie	Floor Architecture III	
Producttype	Tapijttegel	
Construction	Standard	Data + Performance
Type Fabricage	ISO 2424	tufted 1/12"   47.2 per 10cm
Uitzicht	ISO 2424	Multilevel-Patroonlus
Verfmethode	EN 994	100% In Oplossing Geverfd
Productformaat	EN 994	50 cm x 50 cm   20 tiles (5 m²) per box
Primaire Backing	ISO 2424	Pet Nonwoven
Secundaire Backing	ISO 2424	Ecworx S™ Polyolefin Plastomer
Vezel	ISO 2424	Ecosolution Q100™ Polyamide 6   Bevat 100% Gerecycleerd Materiaal
Totale Dikte	ISO 1765	5.8 mm
Afgewerkte Pooldikte	ISO 1766	2.1 mm
Totale Massa	ISO 8543	2736 g/m²
Getuft Gewicht	ISO 2424	670 g/m²
Effectieve Poolmassa	ISO 8543	235 g/m²
Pooldichtheid	ISO 8543	0.113 g/cm³



### Gegevens

Steken	ISO 1763	193,000/m²   41 per 10cm
Elektrostatische Weerstand	ISO 6356	≤ 2.0 kv (Stroll Test)
Gebruik Classificatie	EN 1307	33 Commercial Heavy
Luxe klasse	EN 1307	LC1
Dimensionale Stabiliteit	EN 986	≤ 0.2%
Contactgeluidsisolatie	ISO 10140	26 Db
Geluidsabsorptieclassificatie	ISO 354/11654	0.20 Aw   Class E
Warmteweerstand m² K/w	ISO 8302	0.067 M² K/W Tog 0.67
Weerstand Tegen Droog Uitglijden	ISO 13893	Pass / No Pulled Loops
Kleurvastheid Voor Licht	ISO 105-B02	>6
Ontvlambaarheid	EN 13501-1	Bfl-S1 (Adhered Testing)
Stoel Met Wieltjes	EN 985	≥2.4 Continuous Use

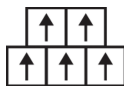
### Aanbevolen Installatiemethode



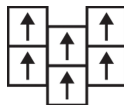
Monolithic



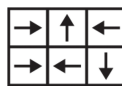
Quarter Turn



Brick



Ashlar



Random



26 dB

Corporate Headquarters +1 800 257 7429 | +1 706 532 7984 | Atlanta +1 404 853 7429 | Bengaluru +91 80 6773 0202 | Beijing +86 10 6568 588 | Chicago +1 312 467 1331 | Dubai +971 4 584 6956 | Hong Kong +852 2623 0371 | Latin America (Miami) +1 305 827 5912 | London +44 207 961 4120 | Los Angeles +1 800 233 1614 | Melbourne +61 3 9939 8543 | Mexico City +55 5010 7600 | Mumbai +91 22 6284 5050 | Nantong +86 400 800 7429 | New York +1 212 953 7429 | Paris +33 (0) 1 81 22 44 39 | San Francisco +1 415 955 1920 | Santiago +562 2431 5000 x 550 | São Paulo +55 11 3071 1702 | Shanghai +86 21 3338 4000 | Singapore +65 6733 1811 | Sydney +1 800 556 302

© 2024 Shaw Industries Group, Inc., a Berkshire Hathaway Company  
May 20, 2024

22

EU.DOP/2895/CPR/1222/0323/EST

OOSTERHOUT SHOWROOM, VAARTWEG 10, 4905 BL NETHERLANDS (NLD)

Notified Body 2895

22

UK.DOP/0338/CPR/1222/0323/EST

SHAW EUROPE LIMITED BLACKADDIE RD, SANQUHAR DG4 6DB, UNITED KINGDOM

Approved Body 0338

EN14041:2004/AC:2006

For use as an indoor floor covering as specified by the manufacturer

Coördinerende Producten

Carpet Tile: **Stone Comfortworx® Tile, Fragment Comfortworx® Tile, Formation Colours Comfortworx® Tile, Fragment Colours Comfortworx® Tile, Stone Colours Comfortworx® Tile, Formation Comfortworx® Tile, Fragment Taskworx® Tile, Stone Taskworx® Tile, Fragment Colours Ecoworx S Tile, Formation Colours Taskworx® Tile, Fragment Colours Taskworx® Tile, Fragment Ecoworx S Tile, Stone Ecoworx S Tile, Formation Taskworx® Tile, Formation Ecoworx S Tile, Stone Colours Taskworx® Tile, Stone Colours Ecoworx® S Tile**

Kenmerken + Certificeringen

Certifications Below Apply Exclusively To The Carpet Tile Rug Itself And Not The Lokworx Tabs Adhesive

Declaration of Performance	<b>EU.DOP/2895/CPR/1222/0323/EST</b>
Cradle to Cradle gecertificeerd™	<b>Zilver Niveau (Versie 3.1)</b>
Environmental Product Declaration (EPD)	<b>3de Partij Gecertificeerd in Overeenstemming Met ISO14044, ISO14025 &amp; EN15804</b>
Embodied Carbon (Cradle to Gate)	<b>4.21 kg CO<sub>2</sub>/m<sup>2</sup></b>
Life-Cycle Carbon Emissions	<b>Carbon Neutral</b>
milieugarantie	<b>Take Back Policy Offered For All Ecoworx S™ Products</b>
land van herkomst	<b>Verenigd Koninkrijk</b>
BREEAM Contribution Credit	<b>Certificate of Approval Schools/Offices/Health/Industrial Shed Retail</b>

Well V2 Contribution Credit

X08 Hazardous Material Reduction Part 1: Limit Hazardous Materials Optimization	<b>C2C Silver Level (Version 3.1)</b>
X10 Volatile Compound Reduction Part 1 (A): Manage Volatile Organic Compounds (VOCs) Optimization	<b>C2C Silver Level (Version 3.1)</b>
X11 Long Term Emissions Control Part 2: Flooring Optimization	<b>M1&gt; Emissions Class For Building Material</b>
X13 Enhanced Material Precaution Part 1: Select Optimized Materials Optimization	<b>C2C Silver Level (Version 3.1)</b>
X14 Material Transparency Part 1: Promote Ingredient Disclosure Optimization	<b>C2C Silver Level (Version 3.1)</b>

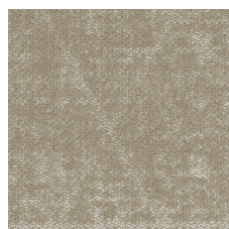
Groen Leed Bijdragekrediet

"MR-krediet: Openbaarmaking en optimalisering van bouwproducten Materiaalingrediënten - Optie 1: Rapportage materiaalingrediënten"	<b>C2C Silver Level (Version 3.1)</b>
"MR-krediet: openbaarmaking en optimalisering van bouwproducten Materiaalingrediënten - Optie 2: Optimalisering van materiaalingrediënten"	<b>C2C Silver Level (Version 3.1)</b>

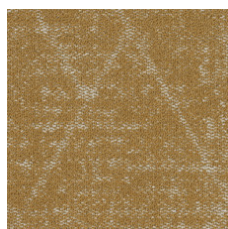
Memberships

WGBC Framework	<b>WGBC Framework</b>
UKGBC	<b>UKGBC</b>
Emirates Green Building Council	<b>Emirates Green Building Council</b>
Chemsec	<b>Chemsec</b>

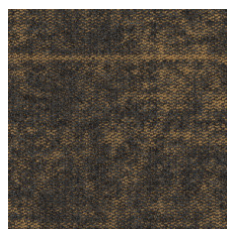
### Lichtreflectiewaarde



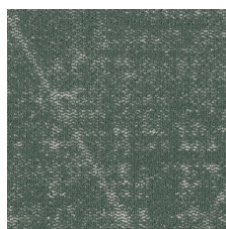
Oatmeal 04111  
LRV 26.9



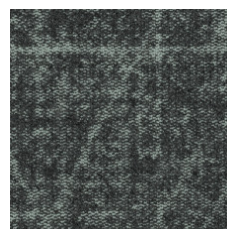
Brushed Gold 04210  
LRV 20.8



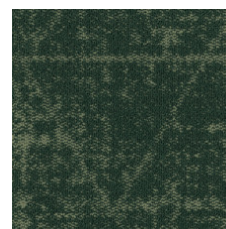
Midnight Brushed Gold  
04211  
LRV 7



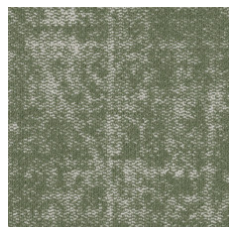
Mineral 04327  
LRV 18.5



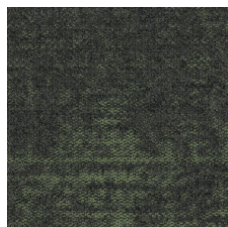
Midnight Mineral 04328  
LRV 10.7



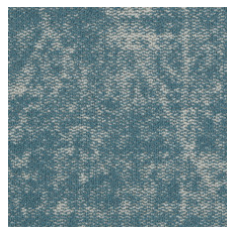
Racing Green 04334  
LRV 5.5



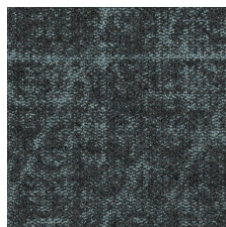
Sage 04375  
LRV 17.4



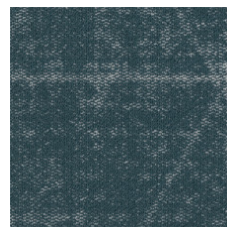
Midnight Sage 04376  
LRV 6.3



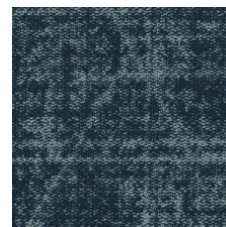
Sky 04411  
LRV 18.8



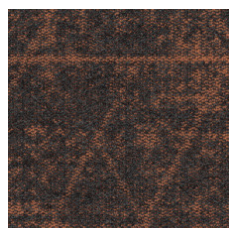
Midnight Sky 04412  
LRV 6.5



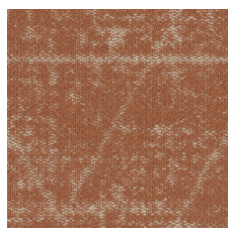
Steel Blue 04447  
LRV 12



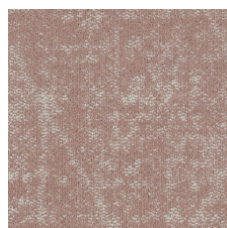
Denim 04486  
LRV 4.8



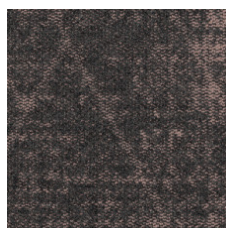
Midnight Apricot 04674  
LRV 6.3



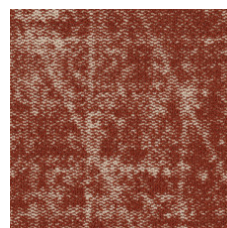
Apricot 04675  
LRV 20.2



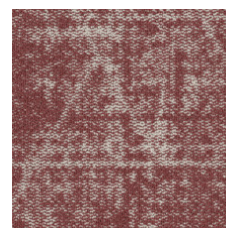
Powder Pink 04800  
LRV 25.5



Midnight Powder Pink  
04801  
LRV 7.1



Copper 04865  
LRV 9.8



Rosewood 04870  
LRV 12.6

### Aanvullende Informatie

\*\*Manufactured in ISO 9001 certified facility. Meets or exceeds all local and national regulations in country of manufacture.

#### Installation Guidelines

#### Maintenance Guidelines

lifetime commercial limited

Specifications are subject to nominal manufacturing variance. Material supply and/or manufacturing processes may necessitate changes without notice.

This product is an exclusive design and may not be duplicated in any manner. Use of this design in the creation of another product design is also strictly prohibited.

Visit [shawcontract.com/testing](https://shawcontract.com/testing) for more information.



Corporate Headquarters +1 800 257 7429 | +1 706 532 7984 | Atlanta +1 404 853 7429 | Bengaluru +91 80 6773 0202 | Beijing +86 10 6568 588 | Chicago +1 312 467 1331 | Dubai +971 4 584 6956 | Hong Kong +852 2623 0371 | Latin America (Miami) +1 305 827 5912 | London +44 207 961 4120 | Los Angeles +1 800 233 1614 | Melbourne +61 3 9939 8543 | Mexico City +55 5010 7600 | Mumbai +91 22 6284 5050 | Nantong +86 400 800 7429 | New York +1 212 953 7429 | Paris +33 (0) 1 81 22 44 39 | San Francisco +1 415 955 1920 | Santiago +562 2431 5000 x 550 | São Paulo +55 11 3071 1702 | Shanghai +86 21 3338 4000 | Singapore +65 6733 1811 | Sydney +1 800 556 302

© 2024 Shaw Industries Group, Inc., a Berkshire Hathaway Company  
May 20, 2024

3 of 3